

Rev	Ind	Revision	Appd	Date

Bushing Data:

Rated Voltage	362	kV
Phase to-earth Voltage	220	kV
Dry Lightning Impulse 1,2/50µs	1175	kV
Wet Switching Impulse	850	kV
Wet Power frequency AC	540	kV
Routine test Imin dry 50Hz	530	kV
Rated Current	5000	A
Creepage Distance	7955	mm
Mass	875	kg

Ordering Data:

BUSHING COLOUR AIR INSULATOR
 LF121061 -F / -AF BROWN / LIGHT GREY

OUTER TERMINAL

	H2	D2
	(mm)	(mm)
LF170 073-A Al	125	60
LF170 073-B Cu	125	60
LF170 073-G Cu/Ag	125	60
OTHER TYPES ON REQUEST		

END-SHIELD
 LF170 046-U EPOXY INSULATED
 LF170 046-UP INSULATED WITH 3 mm PRESSBOARD

DRAW ROD SYSTEM
 LF170 059 LOWER DRAW ROD WITH NI=4 OR NI=6
 LF170 057 UPPER DRAW ROD

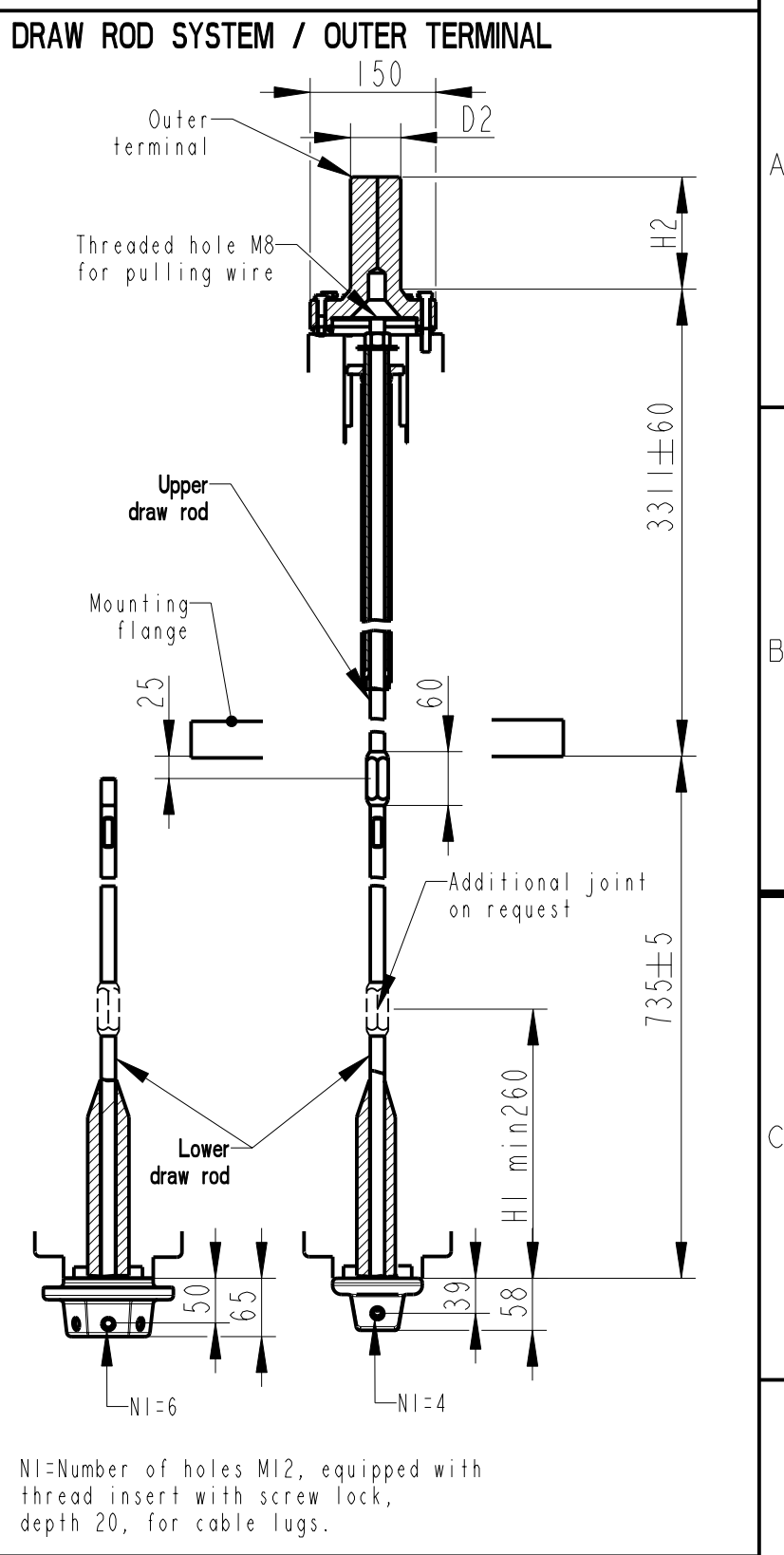
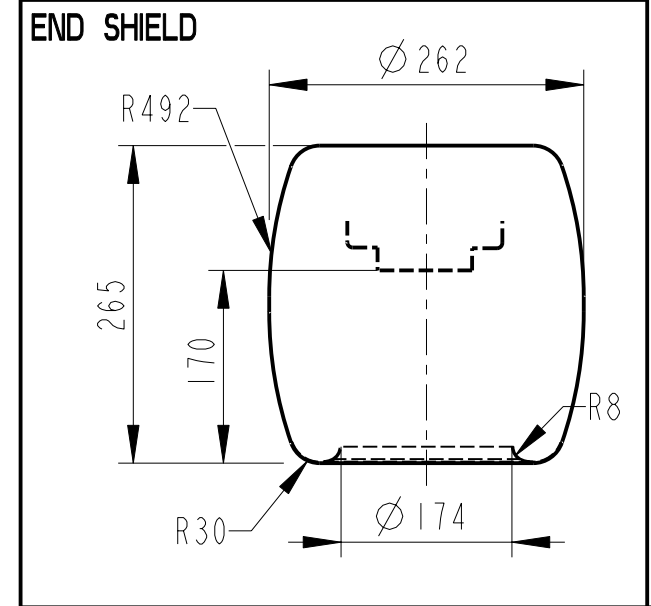
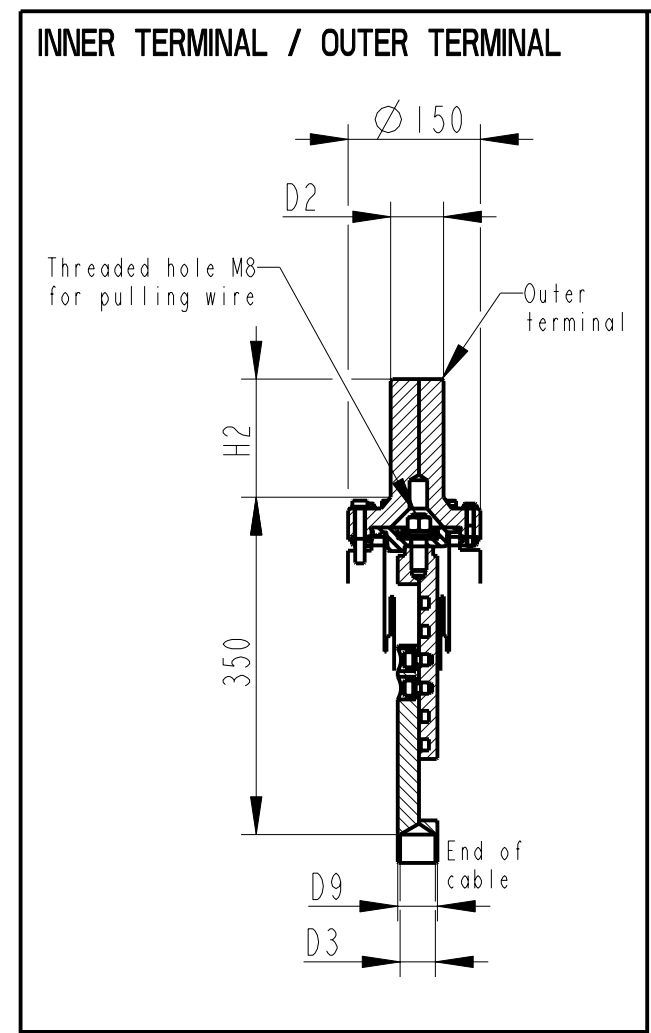
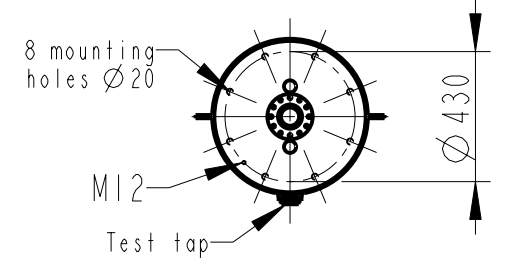
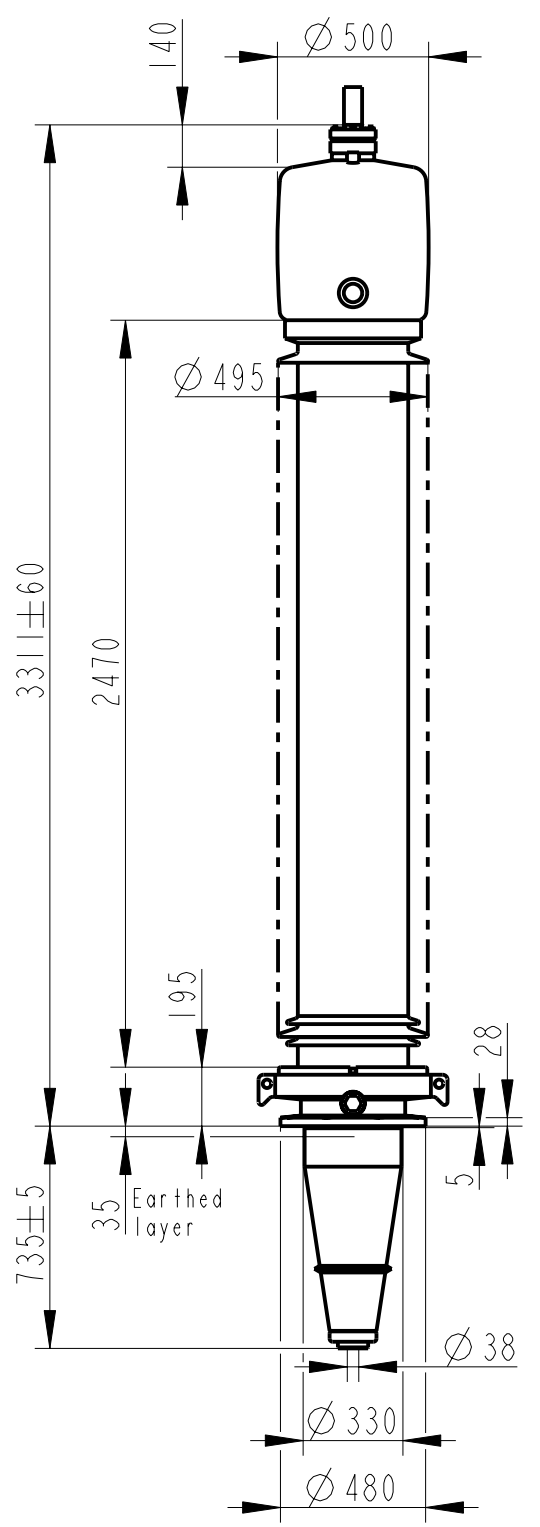
INNER TERMINAL

	D3	D9	Cond.area	Current (A)
	(mm)	(mm)	(mm ²)	IEC
				IEEE
LF170 056-A O *)	35	-	-	-
LF170 056-B	15	35	95	390
LF170 056-C	30	35	285	1000

*) WITH PILOT HOLE D=5

ABB Components Luleå, Sweden

Urty	Nb	50-60 Hz
U	kV SI	kV AC
M	kg L	mm D
C1	pF Tanδ	z
C2	pF Tanδ	z



We reserve all rights in this document and in the information contained therein. Reproduction, use or disclosure to third parties without express authority is strictly forbidden. ©ABB

Based on	Reg. No.	Title	
Prepared Lövnord	Responsible department COM/BK 0022	GOE-1175-850-5000-0	
Approved Johansson	Take over department		
Design engineering review Gutman	Database	Page 1(1)	
ABB ABB Components		Document No. 2751369-24	